



Lining Guide

# Cotton

## Cotton Drill

A medium to heavy weight 100% cotton fabric. Very strong and durable due to its twill weave which also gives it its characteristic diagonal strand appearance and interesting texture.



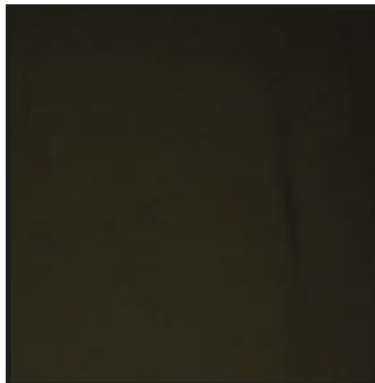
Black



Brown

Cotton Drill's quality and versatility has made it our "default" lining fabric for most of our range.

Olive is a particularly versatile option, beautifully complimenting almost any colour of leather.



Olive

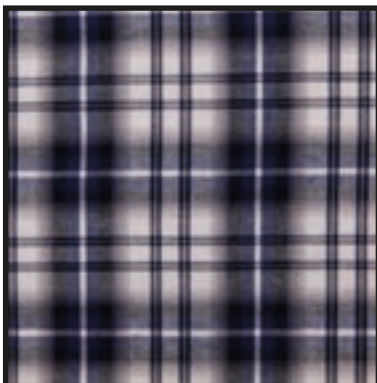


Red

## Cotton Tartan

A lightweight, 100% cotton tartan fabric.

Soft to the touch with a tight weave, it provides a lighter alternative to our range of Lochcarron Tartans.



Bute



Lanark



Royal Stewart

# Cotton

## Cotton Poplin

A strong and crisp medium weight 100% cotton fabric.

It has a plain weave with a hardy but smooth surface and is our period-correct lining of choice for our Type A-2 recreations.



Mustard



Rust

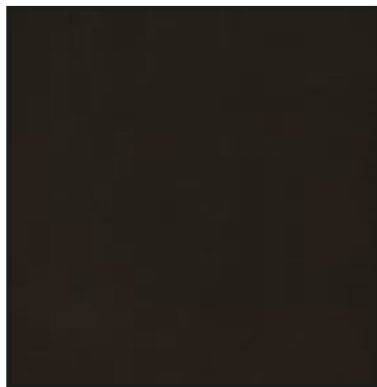
## Cotton Sateen

A light to medium weight 100% cotton fabric made of the finest high-quality yarns.

Cotton Sateen has a smooth surface with a slight sheen and a distinctive soft and silky feel.



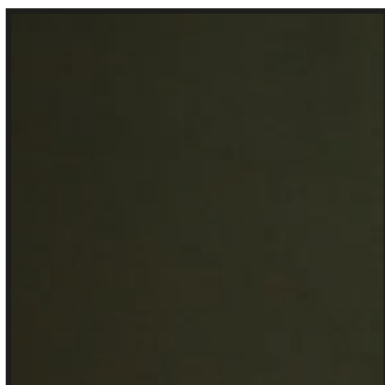
Black



Brown



Navy



Olive



Wine



# Lochcarron Tartan

With a heritage dating back to 1892, Lochcarron of Scotland is the world's leading manufacturer of tartan, championing traditional fabric manufacturing, offering a unique authenticity and showcasing the very best of Scottish textiles.

Lochcarron of Scotland's mill is just ten minutes from our factory and over the decades we've lined thousands of our jackets with their beautiful fabrics.

As well as the range of classic tartans we hold in stock which are visible on the next page, you can also choose to make a custom selection, where you select whichever tartan you like from Lochcarron's massive Reiver (light), Braeriach (medium) and Strome (heavy) ranges on their website.

Alternatively, for the same grade one Lochcarron lining at a nominal surcharge, we offer the 'wild card' option. Selecting this option on your order allows you to input the tartan colour and either 'light weight' or 'heavy weight' depending on your preference. Alternatively, or you can type 'Aero selection' and we'll select the best match for your jacket from our range of Lochcarron roll ends and remnants.

Further information can be found on Lochcarron of Scotland's website:

<https://www.lohcarron.co.uk/>

LOHCARRON  
*of* SCOTLAND

# Lochcarron Tartan



Auld Scotland



Black Stewart



Black Watch



Buchanan Blue



Buchanan Hunting



Isle of Skye



Mckenzie Weathered



Rob Roy Strome



Royal Stewart

# Harris Tweed

## Harris Tweed

Harris Tweed is an iconic and truly unique Scottish fabric - the only material in the world with quality standards governed and protected by its own act of parliament.

To be considered Harris Tweed, a tweed must have been "hand-woven by the islanders at their home in the Outer Hebrides and made from pure virgin wool dyed and spun in the Outer Hebrides".

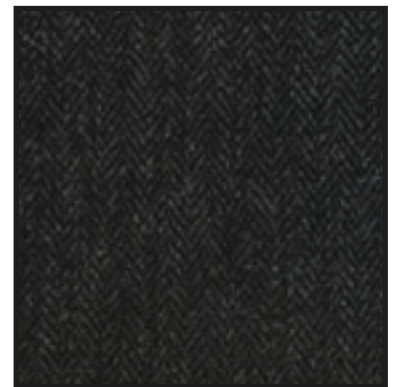
Harris Tweed has a rare character and beauty that has developed from centuries-old tradition. It has an open, loose twill weave that is rough to the touch and unusually, the wool is dyed before being spun, allowing a multitude of colours to be blended into the yarn, creating a cloth of great depth and complexity.



Autumn Window Pane



Black Watch



Charcoal Herringbone



Forest Floor



Granite Window Pane



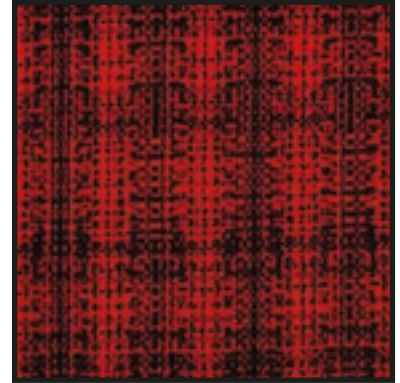
North Sea Herringbone

# Other Tweeds

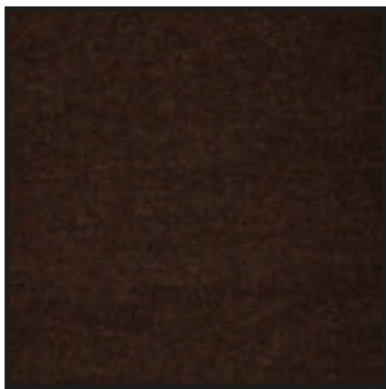
## 'Broken Weave' Tweed

We've had the fine detailing of this classic piece of 1930s Tweed replicated to the millimetre.

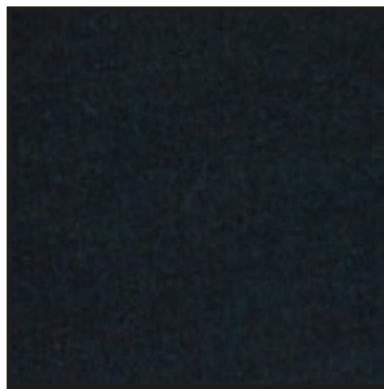
This unique cloth has been hand loomed and woven exclusively for Aero by Prickly Thistle Mills using Jamieson's wool on original restored Victorian looms here in Scotland.



'Broken Weave' Tweed



Brown Herringbone



Navy Herringbone

## Donegal Tweed

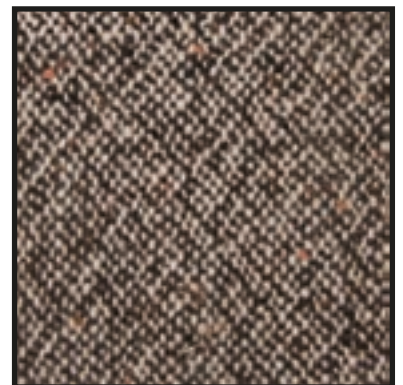
Authentic Donegal tweed, 100% wool dyed, spun, woven and finished in County Donegal, Ireland. This tweed has a rough but soft texture due to the combination of thick and thin yarns used in its production. Its irregularity adds visual interest and makes it unique from other types of fabrics.

The Green Flecked Herringbone option is from the world-famous Molloy and Sons weavers with a beautiful, coloured fleck through a dark green herringbone pattern.

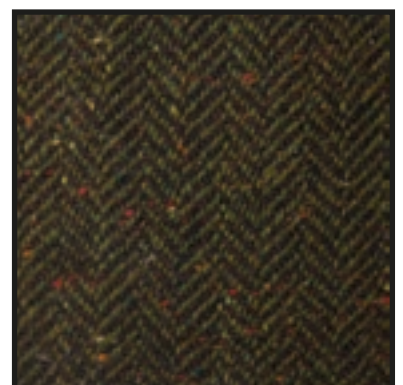
The Barleycorn option is a deadstock roll we have in our stock room from a limited edition run of suits. A very heavy duty tweed with a beautiful vintage look.

## Shetland Tweed

A Shetland Tweed woven in the UK with a soft, open weave and Herringbone structure. Made of pure wool creating a natural, durable & rich fabric that is medium weight with a smoother and softer feel than most tweeds.



Barleycorn



Flecked Green Herringbone

# Corduroy/Moleskin

## Corduroy

A strong and highly durable trouser-grade 100% cotton fabric from Brisbane Moss in the UK.

A midweight material that is both warm and comfortable with its velvet-like grooved finish.



Black



Brown

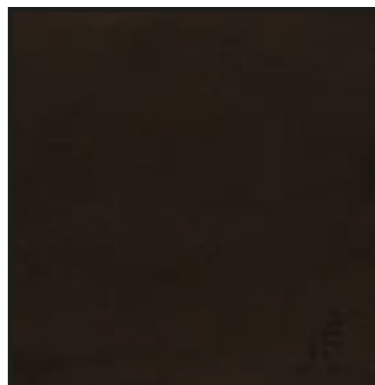
## Moleskin

A heavy cotton fabric normally used for high grade sporting trousers, tightly woven with one side sheared and brushed to create a short, soft pile with a suede-like finish.

One of the softest materials out there, it's also highly versatile throughout a range of temperatures making it arguably the most comfortable lining we offer.



Black



Brown



Navy



# Wool

## Alpaca Wool

The first choice in high grade lining in the immediate post-war years in the USA. Woven in and imported from Peru, this Alpaca and wool blend is a very comfortable and luxurious fabric. It's not only warmer than sheep wool, but it's also lighter and has a soft and silky feel to the touch.



Black



Brown



Grey

## Buffalo Check Wool

This British woven all wool cloth is exclusive to Aero and one we've worked hard with our manufacturer to get right - in fact there is probably nothing like it being woven anywhere else in the world.

We wanted a material woven in "hard" wool, like a high class "Washed Wool" from days long gone by.

It has a firm to the touch hand that is so typical of pre-WW2 utility wool and which is usually only found in vintage clothing.



Green and Black



Red and Black

# Quilted/Sheepskin

## Quilted

After years of searching for a top-quality quilted fabric, we've found one good enough for us to reintroduce the classic 1950's Rayon

Quilted lining as a lining option for our jackets. A vibrant and soft material with 100% wool wadding in the quilting, offering great insulation properties and added comfort whilst still light to wear. As well as the two iridescent two-tone acetate options, we recently launched a Navy Cotton Sateen option which is fast becoming a customer favourite.

Fitted as standard with a Heavy-Duty Corduroy hem strip for durability, as linings in original jackets tended to fray over time.



Petrol Blue



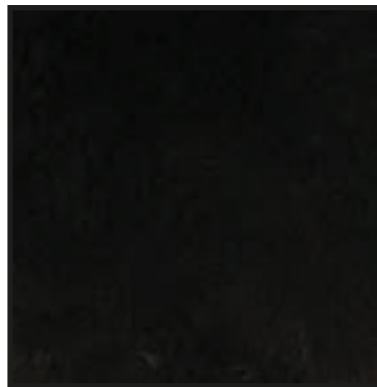
Navy Cotton Sateen

## Sheepskin

Typically used during the 1920s to 1940s in North America. Our Australian 10ml heavy duty shearling represents our warmest lining option with a stunningly beautiful look and luxuriously soft feel. A shearling lining is the most stylish way to make any jacket truly winter-proof.



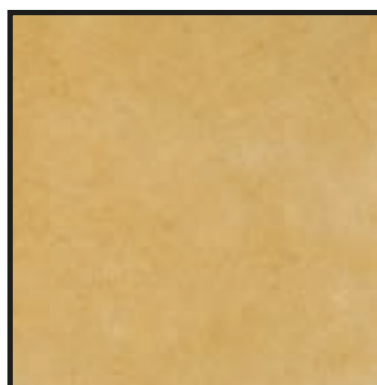
Black Sheepskin



Dark Brown Sheepskin



Golden Brown Sheepskin



Natural Sheepskin



Rust Sheepskin